

2 **Assessment of Soil Salinity on Grand Bahama**
3 **Island Post-Hurricane Dorian**

4
5 DOI: <https://doi.org/10.15362/ijbs.v29i1.507>
6

7 Figure S1. Summarized locations of soil samples collected from wellfields 1 and 6 including
8 its longitude and latitude

SOIL ID	Date of Collection	Latitude	Longitude
W1,2	June 6th,2022	26.515699	-78.665493
W1,9	June 6th,2022	26.516602	-78.685174
W1,S13	June 6th,2022	26.528734	-78.66421
W1,15	June 6th,2022	26.554979	-78.664879
W6,7	June 7th,2022	26.6392	-78.520247
W6,16	June 7th,2022	26.611422	-78.531952
W6,17	June 7th,2022	26.60876	-78.52861
W6,20	June 7th,2022	26.617205	-78.538516
W6,24	June 7th,2022	26.614845	-78.52861
W6,49	June 7th,2022	26.605978	-78.525718
W6,75	June 7th,2022	26.624795	-78.479715
W6,114	June 7th,2022	26.627117	-78.51672
W6,116	June 7th,2022	26.631183	-78.516376
W6,119	June 7th,2022	26.640175	-78.518294
W6,120	June 7th,2022	26.641846	-78.514073
W6,124	June 7th,2022	26.644584	-78.519927
W6,151	June 7th,2022	26.639152	-78.546623
W6,153	June 7th,2022	26.635043	-78.539424
W6,304	June 7th,2022	26.648663	-78.521039

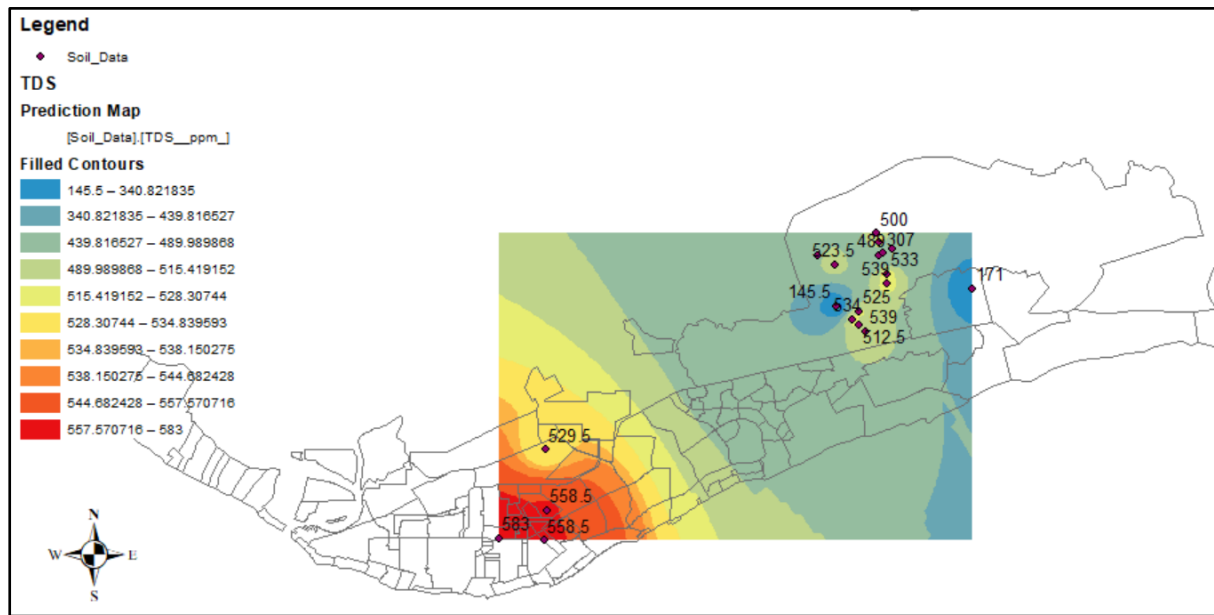
9
10 Figure S2. Map of Grand Bahama located in the archipelago of the Commonwealth of The
11 Bahamas (Google, n.d)



13 Figure S2. Locations of Wellfield 1 and 6 on the map of Grand Bahama (Google n.d)



14
15
16 Figure S3. Total dissolved solids status for Wellfields 1 and 6 for 2022



17
18
19
20 Figure S4. Organic matter status for Wellfields 1 and 6 for 2022

